

Premier ORTHOPAEDICS
ICEWORKS®

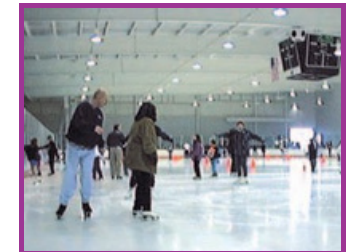


A Great Place for Hockey

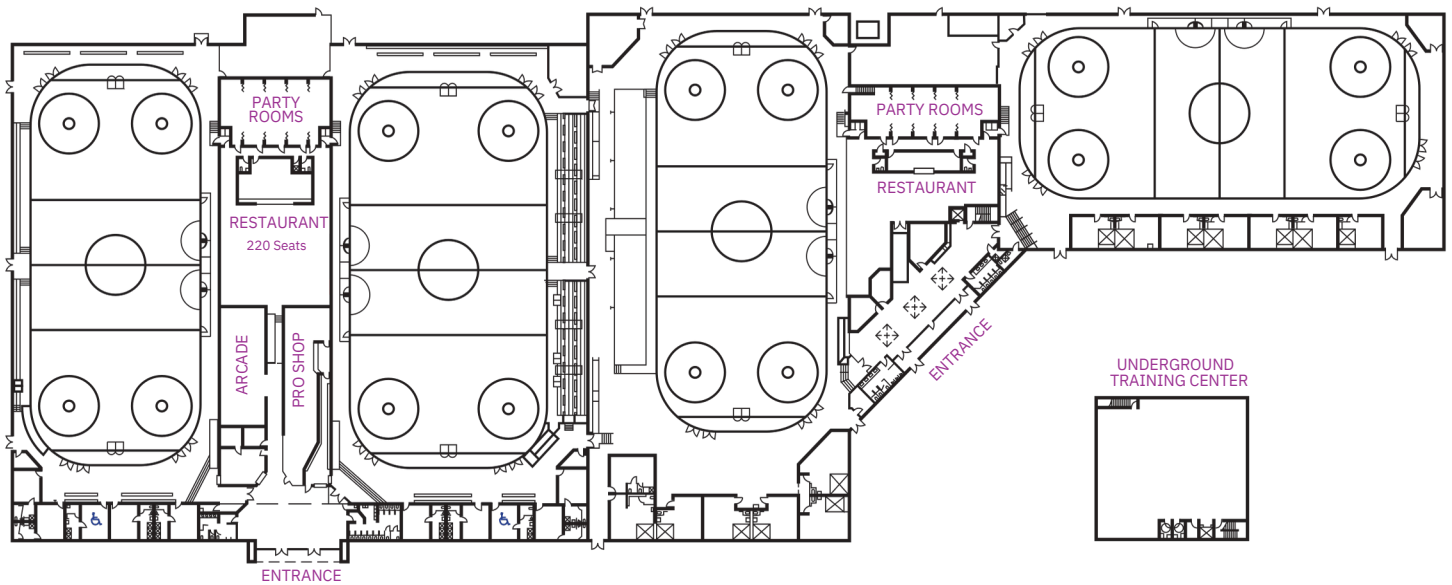


IceWorks Skating Complex

- State-of-the-art four rink facility
- Two full service restaurants, each seating 220, with view of both ice surfaces
- Spacious, clean locker rooms
- Fully stocked Pro Shop with friendly service, expert skate sharpening and on-site embroidery
- www.iceworks.net



ICEWORKS



IceWorks Twin Rinks of Aston opened its doors to the public in October of 1997. The building consisted of two ice surfaces, a full-service restaurant, full-service pro shop, arcade, and banquet/party rooms.

Since opening, IceWorks has been busy with games from local school teams, in-house teams, the Delco Phantoms and the Philadelphia Little Flyers.

IceWorks is the only public rink in the United States or Canada that has a professional coaching staff. Jim Watson, a former Philadelphia Flyer, leads the Hockey staff along with the rink's General Manager Stephane Charbonneau. Uschi Keszler, coach of Olympic skater Elvis Stojko, leads a Figure Skating staff of 18 full-time coaches.

In the fall of 2001, the IceWorks Skating Complex opened two more ice rinks to accommodate more hockey teams and figure skaters. IceWorks is proud to serve the community with a fun, clean facility where they will be greeted by a smiling and knowledgeable staff.



JIM WATSON



STEPHANE CHARBONNEAU



IceWorks Restaurants

- Two full service

restaurants offering daily breakfast, lunch and dinner selections.

- Extended menu and daily specials prepared by Chef Lou Tiernan
- Glass enclosed—offering you a full view of the activity in all rinks



- Offers catering services for team parties
- Offers private dining and party rooms

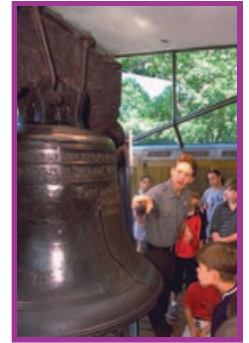


Things To Do in Philadelphia

When you're at IceWorks for a tournament, you're just a slapshot away from a glorious day in Philadelphia. Sightseeing, shopping, dining—it's all there for you.

INDEPENDENCE NATIONAL & HISTORIC PARK

Independence National Historical Park, located in downtown (called "Center City"), Philadelphia, is often referred to as the birthplace of our nation. At the park, visitors can see the Liberty Bell, an international symbol of freedom, Independence Hall, a World Heritage Site where both the Declaration of Independence and the U.S. Constitution were created. You won't want to miss the beautiful new National Constitution Center. This interactive museum is the first dedicated to honor and perpetuate the ideas embodied in the U.S. Constitution. With more than 100 multimedia exhibits, you can watch an oath ceremony video, cast your vote for your favorite president of all time and sign the Constitution.



HISTORIC PHILADELPHIA

Philadelphia's historic district is alive with activity all-year round! With dozens of wonderful attractions, from the Liberty Bell to other hidden treasures, your trip to Philadelphia will be most memorable! As you stop by Philadelphia's famous, and not-so-famous, sites, you'll hear the sounds of the colonial Fife and Drum Corps. You'll even encounter some real-life colonial Philadelphians!

GREAT RESTAURANTS

Sit. Eat. We have some spectacular 5-star restaurants, and dozens more that are merely terrific.

Every price range, too: South Philly Italian, Chinatown's best, French Country inns, and of course Manayunk, that hillside town within our town that's a shrine to calories and art. And foodies from all over the world love the fragrant bustle of Reading Terminal Market, a farmer's market that could be in Paris but fortunately, isn't.

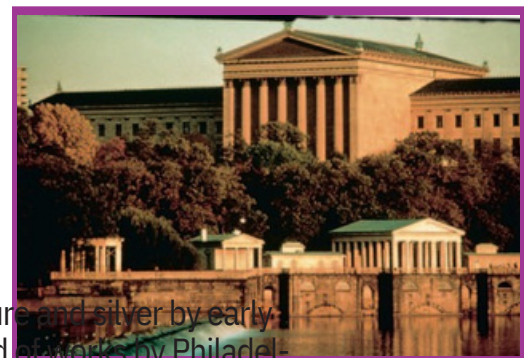


FRANKLIN INSTITUTE

Interested in science... and fun? The Franklin Institute offers IMAX films, enjoyable shows, and informative exhibits.

PHILADELPHIA MUSEUM OF ART

The Philadelphia Museum of Art is among the largest and most important art museums in the United States. The American collections include extensive holdings of Pennsylvania German art; refined furniture and silver by early Philadelphia craftsmen; and the most important collection in the world of works by Philadelphia artist Thomas Eakins.



And yo, you can even run up the steps like Rocky!

Brandywine Valley Attractions

Delaware County's Brandywine Country comes alive in the spring. You can stroll through the gardens and arboretums or learn about American history at many sites throughout the region. Even antiquing is more pleasant when you can top off your afternoon outdoors at a local winery or café.

Local museums preserve artifacts from our nation's past, while other attractions, such as the Franklin Mint and QVC Studio Park, showcase the technological prowess.

LONGWOOD GARDENS

There's no better place to watch the wonders of spring unfold! Treat yourself to the breathtaking gardens and displays—with over 6,000 different types of plants making their appearance.

BRANDYWINE BATTLEFIELD PARK

Take a trip back into American history as you tour Washington's Headquarters, Lafayette's quarters and the campsite of Washington's colonial troops.

WINTERTHUR MUSEUM & GARDEN

Originally a private home in the duPont family, this 60-acre garden is a horticultural masterpiece. Along with the garden, Winterthur offers the impressive atmosphere of a world-class museum within the charming setting of a country estate. More than 89,000 object represent a variety of American Art.

BRANDYWINE RIVER MUSEUM

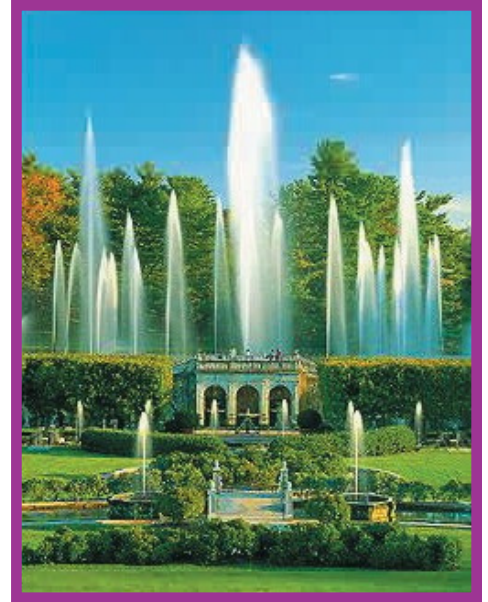
A 19th century grist mill is the setting to view major works of art by three generations of the Wyeth family and other American artists.

FORT MIFFLIN ON THE DELAWARE

The site of a seven-week siege by the British Navy in 1777 and Confederate and Union Prison Camps during the Civil War.

HAGLEY MUSEUM

An original duPont mansion, tour black powder mills, exhibits and a 1803 Georgian-style residence set amidst 230-acres of gardens.



LONGWOOD GARDENS



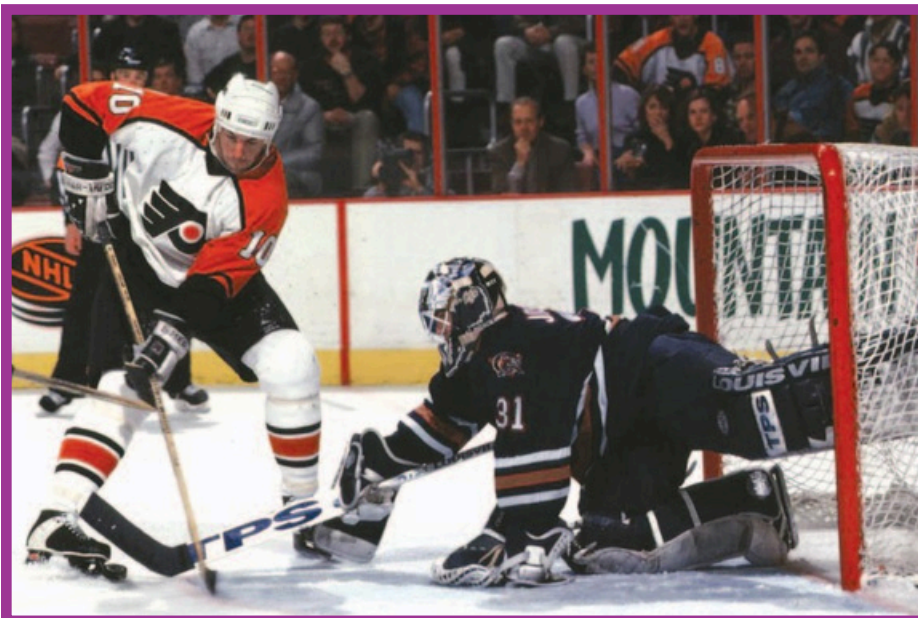
BRANDYWINE BATTLEFIELD



Area Sporting Events

There's always great sports events happening in the Philadelphia area.

- The Philadelphia Flyers lace 'em up in the Wachovia Center while their American Hockey League affiliate, the Phantoms, take on the competition at the Wachovia Spectrum.
- Interested in NBA action? The Philadelphia 76ers, led by Allen Iverson, strut their stuff at the Center.
- If baseball's for you, root, root, root for the home team as the Philadelphia Phillies play at the beautiful Citizens Bank Park.
- If football's your game, the Philadelphia Eagles, depending on their performance, try to work their way back to the Super Bowl at the beautiful Lincoln Financial Field. Or, you can take in an Philadelphia Soul Arena League game. You might even catch a glimpse of team owner Jon Bon Jovi.
- Want more? There's always a full state of college sports events on tap in the area.



Traveling to Philadelphia

PHILADELPHIA INTERNATIONAL AIRPORT

Philadelphia International Airport (PHL) serves as the principal gateway for the fifth largest metropolitan population in the United States. Located approximately seven (7) miles from downtown Philadelphia, the Airport is easily accessible from Interstates 76, 95 & 476.

In June 2001, the Airport ushered in a new era of regional airline

service with the opening of Terminal F. This 185,000 square-foot facility offers 38 gates for regional and commuter jets, and was designed to accommodate 6 million passengers a year.

In May 2003, PHL celebrated the opening of its expansive new international terminal. Additional improvements associated with this construction include two new parking garages, and new northbound and southbound Interstate 95 exit ramps

In May of 2004, Philadelphia International Airport embarked on a new and exciting chapter in its long history when the nation's No. 1 low-fare carrier, Southwest Airlines, inaugurated service.

Philadelphia International Airport now serves nearly 25 million passengers annually.



DIRECTIONS TO ICEWORKS

FROM THE PHILADELPHIA AIRPORT AND POINTS NORTH:

Take I-95 south to Route 322 west. Go one mile and take the Route 452 exit. At the second light, turn right at Duttons Mill Road. The rink is on the left just past the Sun Credit Union. Travel time: approximately 20 minutes.

FROM THE WILMINGTON, DELAWARE AREA AND POINTS SOUTH:

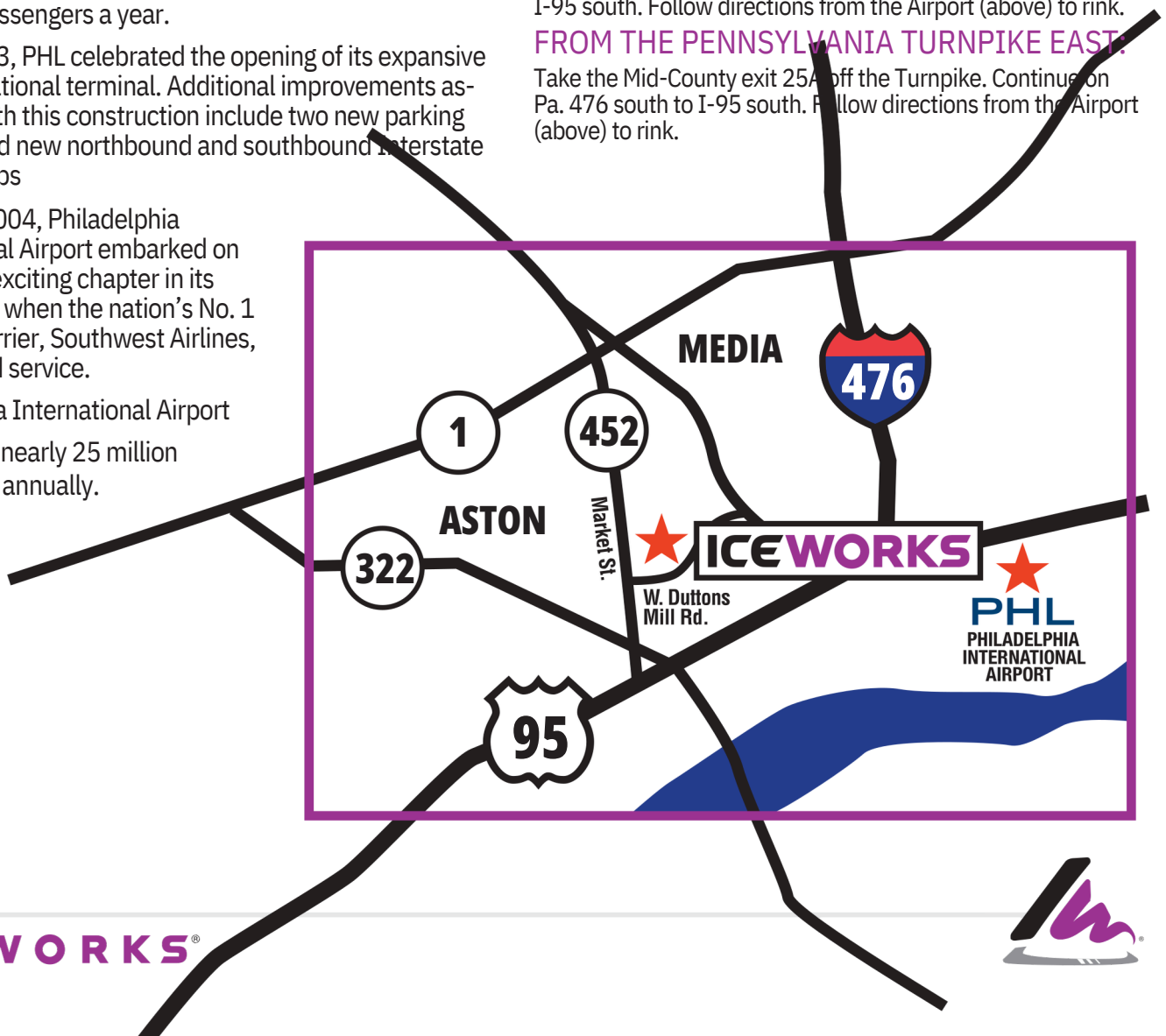
Take I-95 north to Exit 2 (Route 452). Turn left off the ramp going north on Rt. 452. Go 1.5 miles and turn right at Duttons Mill Road. The rink will be on the left just past the Sun Credit Union.

FROM THE PENNSYLVANIA TURNPIKE WEST:

Take Exit 24 Valley Forge off the Turnpike. Continue through the toll booths and stay on Pa. 76 (Schuylkill Expressway) until Pa. 476 south. Take Pa. 476 south to the end where you take I-95 south. Follow directions from the Airport (above) to rink.

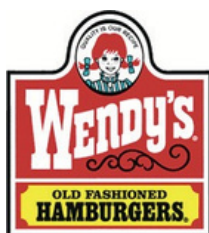
FROM THE PENNSYLVANIA TURNPIKE EAST:

Take the Mid-County exit 25A off the Turnpike. Continue on Pa. 476 south to I-95 south. Follow directions from the Airport (above) to rink.



Restaurants

Our area offers a vast selection of national chains convenient to our two skating complexes. Couple these choices with restaurants on the Main Line, in our suburbs or in Philadelphia and you can turn the trip into a world class dining experience.



Special Tournament Features

Spectator seating on all 4 rinks with heated restaurant seating available

Two restaurants in the facilities serving breakfast, lunch, dinner and snacks

Four ice surfaces (three NHL- and one Olympic-sized)

Large and clean player locker rooms with bathrooms and showers

On-site trained security personnel

On-site general manager

Ample parking - 500 car parking at the facility

No driving tolls within a 20 mile radius

Additional products and services available:

- Hospitals • Pharmacies • Laundromats • Churches • Movie Theaters
- Shopping Malls. The Granite Run and Springfield Malls are a short drive away. The world famous King of Prussia Mall is around a 30 minute drive.



A Taste of

PHILADELPHIA

SPECIAL PHILADELPHIA
FOOD TREATS
SERVED AT THE RINKS

- Soft Pretzels
- Hoagies
- Cheese Steaks
- Tastykakes



Visit the Philadelphia area
and have a great time at
our tournament!

Contact IceWorks

IceWorks Skating Complex
3100 Duttons Mill Road
Aston, PA 19014
610-497-2200

